

CERTIFIED LAND CORNER RECORDATION

RECEIVED
LARAMIE COUNTY
CHEYENNE, WY.

DESCRIPTION OF CORNER EVIDENCE FOUND, AND ORIGINAL RECORD (if known)

NOV 9 AM 9 09

S.10 S.11
S.15 S.14
T.14N., R.63W.
6th P.M.

Found 1 1/2" Aluminum Cap down 13".

G.L.O. Record: Granite stone 18" x 10" x 5" set by Edwin James & Alfred M. Rogers, Deputy Surveyors, June 16, 1871.

DESCRIPTION OF MONUMENT AND ACCESSORIES ESTABLISHED TO PERPETUATE THE ORIGINAL LOCATION OF THIS CORNER:

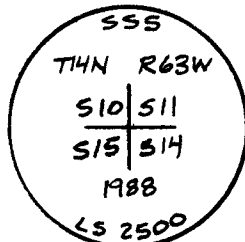
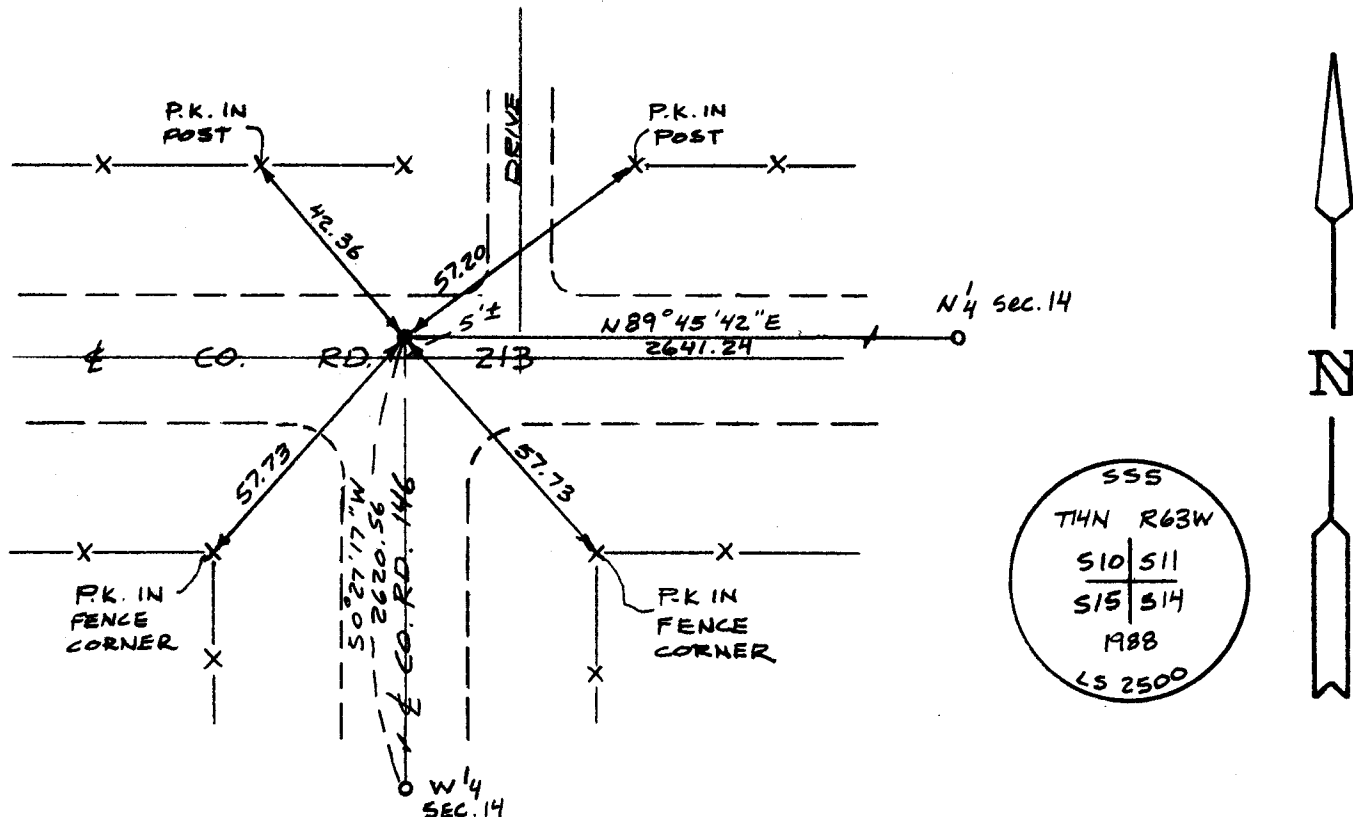
At the corner:

Reset 5/8" x 18" rebar with 2" Aluminum Cap stamped as shown below 5' North of centerline of County Road 146. Cor. set above found corner.

Accessories :

See ties below.

SKETCH, WITH COURSE AND DISTANCE TO ADJACENT CORNER IF DETERMINED IN THIS SURVEY. (May Sketch or Paste Reproduction on Reverse Side.)



I, John A. Steil certify that I have carefully performed or reviewed the work done on the diagrammed corner as reported on this recordation form and approve the same.

John A. Steil
Signature of Surveyor

L.S. 2500
Registration No.

STATE OF WYOMING,
Office of Clerk and Recorder,
County of _____

This "corner record" was filed for record on the _____ day of _____, 19____, was noted on the cross-index plat and is assigned page No. _____, in book No. _____.

County Official			
Cross Index No. J-17	T. 14N	R. 63W	Mer. 6th
_____	T. _____	R. _____	Mer. _____
_____	T. _____	R. _____	Mer. _____
_____	T. _____	R. _____	Mer. _____
_____	T. _____	R. _____	Mer. _____
_____	T. _____	R. _____	Mer. _____
_____	T. _____	R. _____	Mer. _____